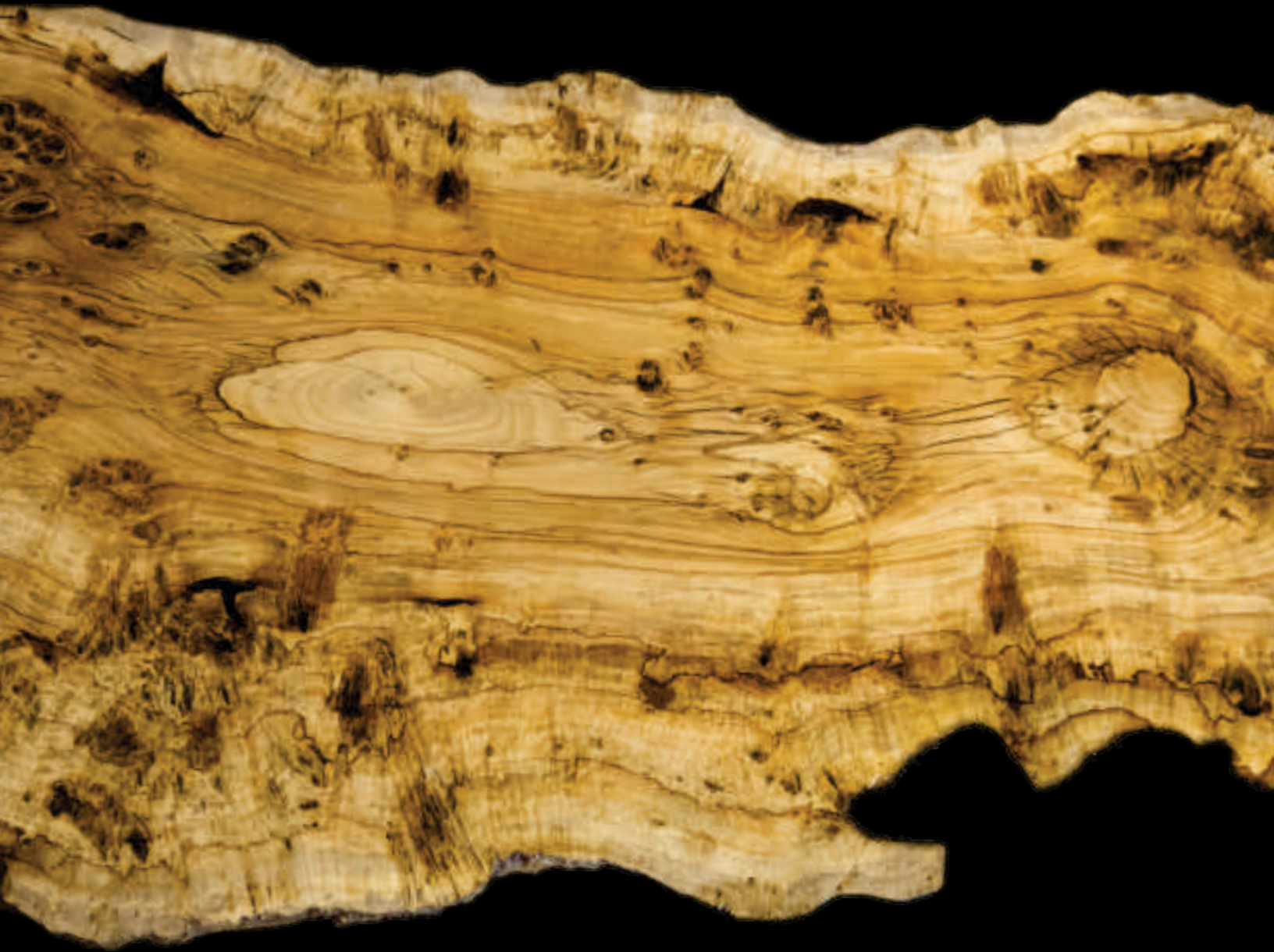
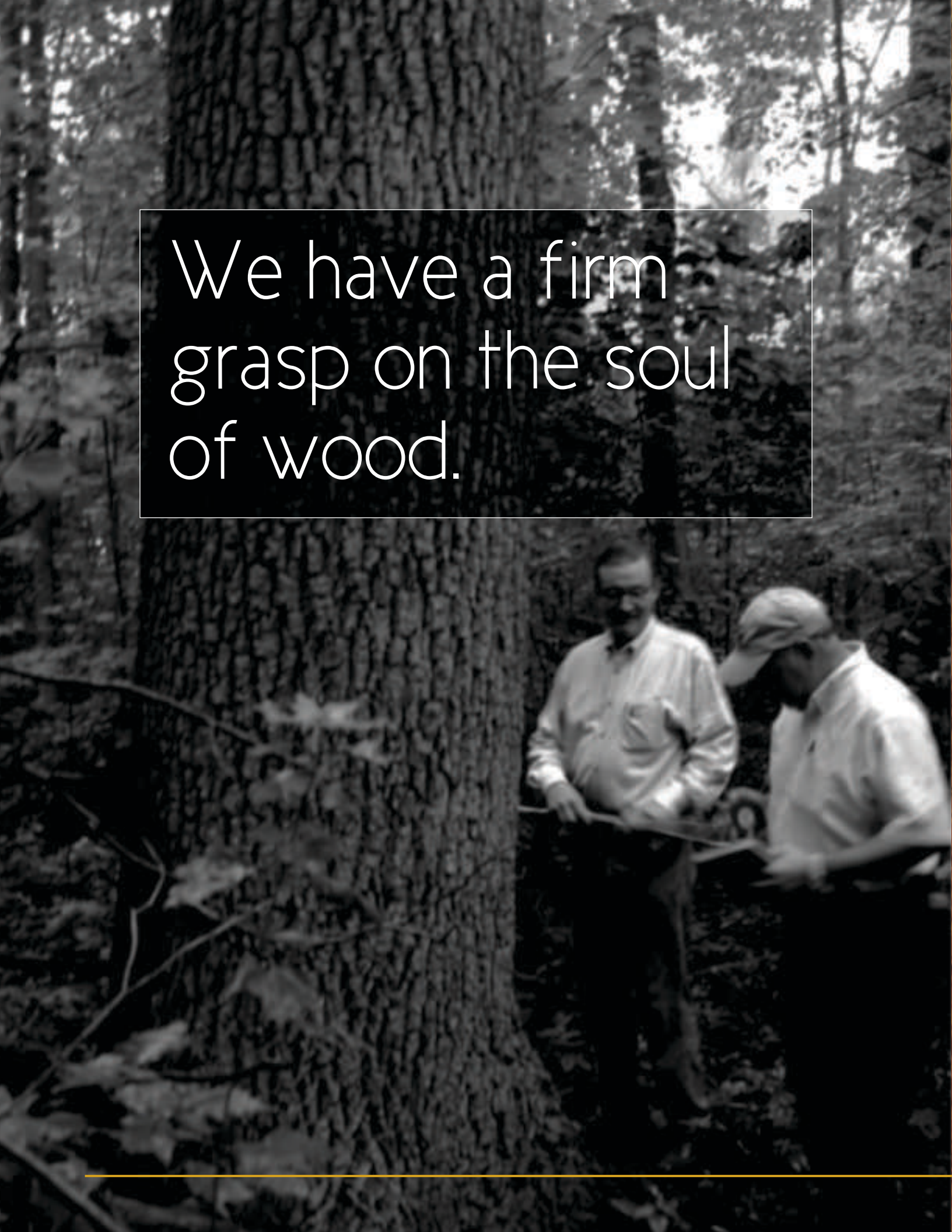


Unlocking Wood's Natural Beauty





We have a firm
grasp on the soul
of wood.

Or, perhaps,
it grips us.


This deep understanding and appreciation of wood compels us to apply its rich expressions to the world around us. Our veneer adorns the most luxurious automobiles, private planes and yachts, the largest homes in the world and the most adventurous architecture.



M. BÖHLKE VENEER CORP.



Passion and
Enthusiasm



In 1963, Manfred Böhlke emigrated from Germany to the United States, bringing with him an intense understanding and enthusiasm for wood. He started his business humbly and earnestly, focusing on harvesting the finest hardwood logs in North America. His "Old World" style for working relentlessly for excellence, laid the ground work in forming M. Böhlke Veneer Corporation into the leader in fine veneer.

Today, M. Böhlke Veneer is privileged to source and shape nature's most exquisite resource for some of the world's most ambitious projects.



Quality
Quantity
Consistency



Veneer, Lumber, Face and Logs

Our Fairfield, Ohio location devotes over 500,000 square feet to hardwood veneer, faces and exotic lumber. No other North American facility can match the size and selection. We love to show visitors what we can do. Whether you seek several containers of veneer or an individual log, we are ready to help and advise you in your selection.

Our inventory includes all major indigenous species, with Walnut, Maple and White Oak being the most popular. Our exotic inventory is unparalleled in breadth of imported species, and we often fill orders for customers looking for especially unique woods. Finally, our lumber inventory contains only imported species in both square edge and boule form. It is a Mecca for designers and architects, boat builders, aircraft manufacturers, woodworkers and custom furniture builders seeking lumber to accent their special projects.





Innovation and
Expertise

We have the most
advanced technology.
If it doesn't exist,
we build it.

We have been able to match our enthusiasm for the natural beauty of wood with the most modern veneer manufacturing facilities in the world. By leveraging our veneer expertise, we have developed and patented many methods, like our vacuum flitch beds, to improve cutting quality and increase yields to maximize our natural resources. The end result is to provide our customers with a superior product at a competitive price.



M. BÖHLKE VENEER CORP.



Creating Luxury



Every day, we transform over 200 logs into 1,500,000 square feet of veneer in our state-of-the-art mill.

Flitch

Our logs are flitched using a custom-built carriage and log turner with laser lights and computer programs assisting our sawyer to maximize our yield.

Cook

Flitches are cooked in hot water for a precise length of time at variable temperatures, all programmed and controlled by computer software to attain the desired color and quality.

Slice

Slicers that feature patented vacuum bed tables hold the flitch with air suction only. This improves manufacturing quality, increasing yield and production time.

Dry

Veneers are dried and pressed flat in specialized dryers manufactured to manage optimum moisture content.

Bundle

Veneers are clipped, bundled, tied and measured by our custom-developed system which keeps precise measurements of every bundle.



Our Showroom

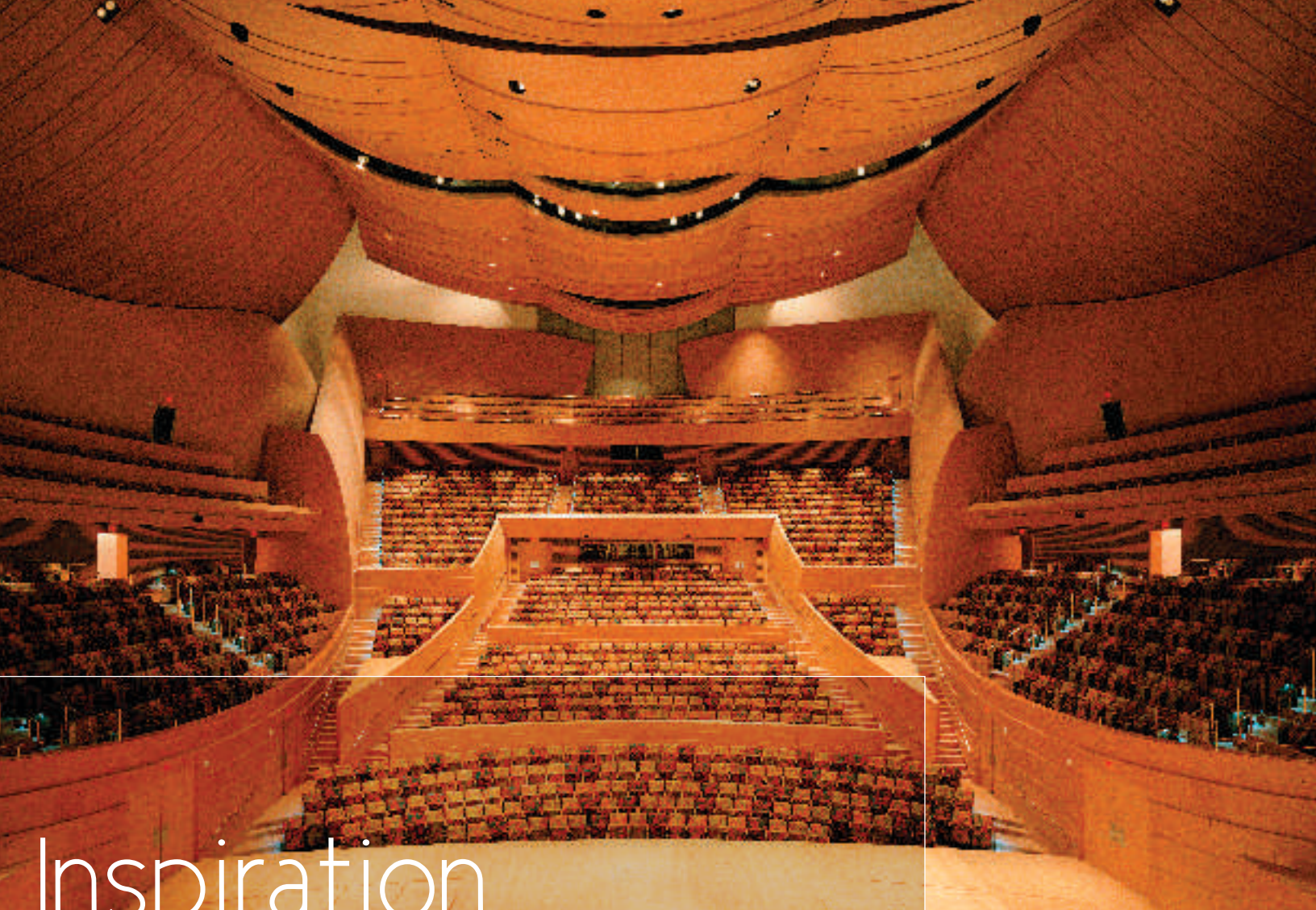


M. Böhlke Veneer travels the world searching for and selecting hardwood timbers to manufacture into our fine wood veneers. Architects, fine furniture designers and woodworking connoisseurs look to us for the truly hard-to-find unique wood in over 150 species, including burls, crotches and figured wood. For over half of a century, we have been delivering the world's best woods to the global marketplace.

Our long-term, solid supplier relationships enable us to service even the most discriminating accounts and ambitious projects.



M. BÖHLKE VENEER CORP.



Inspiration





M. BÖHLKE VENEER CORP.



We love wood.

And we're focused on making it last.

M. Böhlke Veneer has a strong commitment to preserving the temperate hardwood forests that provide the raw material for our veneers. We work diligently with our log suppliers and timberland owners to harvest only mature trees, the cutting of which allows for younger trees to grow taller, healthier and faster. Through this process of natural reforestation by selective harvesting, America's hardwood forests have regenerated substantially over the years.

Discover what the M. Böhlke Veneer team can do for you.

Get in touch today to schedule a consultation with one of our associates and a visit to our showroom. Whatever you have in mind for your next project, your vision is our future.



M. BÖHLKE VENEER CORP.

8375 N. Gilmore Road
Fairfield, Ohio 45014 USA
P: (513) 874-4400 F: (513) 682-1469 E: sales@mbveneer.com
www.mbveneer.com